

STRONG PRESENCE, SUBLIME SUPPORT

LiuGong has established a solid infrastructure with over 12,000 employees worldwide, 320 dealers, 7 regional parts depots and 9 strategically placed global offices to support its dealer and serve customers properly result in less damage and machine downtime.



The LiuGong series of logos herein, including but not limited to word marks, device marks, letter of alphabet marks and combination marks, as the registered trademarks of Guangxi Liugong Group Co., Ltd. are used by Guangxi Liugong Machinery Co., Ltd. with legal permission, and shall not be used without permission. Specifications and designs are subject to change without notice. Machines shown may include optional equipment and may not include all standard equipment.

Always a LiuGong dealer near you.



Guangxi Liugong Machinery Co., Ltd.

No. 1 Liutai Road, Liuzhou, Guangxi 545007, PR China
T: +86 772 388 6124 E: overseas@liugong.com
www.liugong.com

Like and follow us:



Version 1.0

06/2015 Designed by LiuGong

Engine	Yanmar 4TNV94L-BVLY
Gross Power	36.2 kW (48.5 hp)
Net Power	33.7 kW (45.2 hp)
Maximum Digging Depth	3,875 mm
Bucket Capacity	0.21 m ³
Operating Weight	5,900 kg

906D

EXCAVATOR



TOUGH WORLD. TOUGH EQUIPMENT.



**BUILT TO
OUTLAST**



SUMMARIZED BENEFITS

BUILT FOR EFFICIENCY

Fuel Efficient Yanamar Engine
Advanced Hydraulic System

EASY TO MAINTAIN

Easy Engine Access
Convenient Maintenance Ports
Fault Diagnostic System

ALWAYS RELIABLE

Parts, Service, Attachments to Count on
Wider More Stable Axles
Proven Hydraulics

OPERATOR COMFORT AND SAFETY

Ergonomic Design
Minimal Kick Back
Excellent Visibility
Comfortable Low Noise Cabin

ALL-ROUND SERVICE SUPPORT

Exceptional Service Support
Parts Support
Maintenance Support
Machine Inspection
Training





**DELIVERING
ALL-ROUND
PERFORMANCE
WITH LOW
RUNNING COSTS**

TOUGH WORLD. TOUGH EQUIPMENT.>>>

BUILT FOR EFFICIENCY

EQUIPPED WITH A FUEL EFFICIENT WORLD- CLASS

Yanmar 4TNV94L-BVLY . The 906D provides 36.2 kW (48.5 hp) @ 2,100 rpm while saving on fuel costs.

ADVANCED HYDRAULIC SYSTEM

Arm " in " regeneration circuitry system

When the arm is moved to a certain point the regeneration valve is activated, so that the return oil flow from the arm cylinder rod side can be reused on the arm. piston side, this allows a faster arm in movement.

This protects the arm cylinder piston from cavitation due to a lack of hydraulic oil when the arm is in Straight Travel Function

BOOM & ARM HOLDING SYSTEM

Prevents the boom and arm from falling when in a neutral position.

SMOOTH OPERATING TRAVEL PILOT VALVES

The travel pilot valves are equipped with hydraulic dampeners, this makes operation both more efficient and much smoother.





EASY TO MAINTAIN

EASY ENGINE ACCESS

The 906D is designed for convenient maintenance. The engine is conveniently accessible when the rear hood is lifted up it provides plenty of space for maintenance, which can be done from a standing level.

CONVENIENT MAINTENANCE PORTS

Maintenance ports and the hydraulic system on the 906D have been placed in convenient locations for quick inspection so you spend less time working on your machine, and have more time having your machine work for you.





**CONSTRUCTION
EQUIPMENT
AHEAD**



ALWAYS RELIABLE

WORLD CLASS COMPONENTS

The 906D uses major components and systems from advanced suppliers like Yanmar, KYB, Nabtesco and advanced in-house technology from LiuGong.

PARTS, SERVICE AND ATTACHMENTS TO COUNT ON

Part of a reliable excavators is having parts, service and attachments so reliable you can count on them whenever, wherever. Genuine LiuGong parts are the perfect match to keep your investment working over the years and can be counted on when you need. Service is reliable and can be counted on to keep your excavators up and running. Attachments for the machine have been made in-house and are part of a complete LiuGong system.

STANDARD REINFORCED BUCKET

Reinforced idler linkage for the toughest jobs

Rock guard plates with vertical reinforcement strips protect the arm.

Reliable lower frame

WIDER MORE STABLE AXLES

The 906D has an improved center of gravity thanks to wider more stable axles, this makes operation easier, more reliable and safer.



COMFORT AND SAFETY

ERGONOMIC DESIGN

This is one of LiuGong's many ergonomically designed machines, placement of the buttons, levers, seat, and layout of the operator environment is designed to fit the body of the operator.

The pilot lock handle on the handrail box prevents unexpected movement since it locks the machine's ignition system.

Soft, flexible, pilot control operating handles are convenient and comfortable for long operating hours.

Large, swing design foot pedals are comfortable and allow the operator to keep their feet on the foot rest and still operate the machine.

Easy to clean, form-fitted, floor mat is more functional and durable.

High-back suspension seat is adjustable for all operator weights and heights.

High-powered air conditioner and efficient arrangement of air outlets combine for great operator comfort—even when the front window is open.

MINIMAL KICK BACK

During operation and swinging the kick back is minimized not only to improve control and operator comfort but also to reduce damage to the machine.

COMFORTABLE, LOW NOISE CABIN

The spacious climate-controlled cab is built with advanced sound-reducing technology for both outside the cab and at the operator's ear.

EXCELLENT VISIBILITY

The enlarged cab allows the operator excellent 360-degree visibility including the working instruments, and the rear of the machine. This makes operation easier and much safer.





ALL- ROUND SERVICE SUPPORT

EXCEPTIONAL SERVICE SUPPORT

The LiuGong Product Support Team provides parts and service solutions for the owning and operating needs of our customers. Be assured that with every machine purchased a dedicated team of LiuGong specialists are ready to provide exceptional support. For all your machine support needs from warranty and service repairs, planned maintenance, training, and getting the right genuine LiuGong part, contact your local LiuGong dealer and experience our service support promise.

PARTS SUPPORT

Genuine LiuGong Parts are only available through the LiuGong Dealer Network. Keep your machines running at its highest levers by using only Genuine LiuGong Parts. LiuGong maintains an extensive inventory in its 11 Parts Distribution Centers around the world to bring the parts closer to the customer.

MAINTENANCE SUPPORT

Your local LiuGong dealer will arrange a factory-trained service expert to perform all maintenance on your equipment to the precise specs and schedules required to keep your machine at top productivity.

MACHINE INSPECTION

Before every busy season, your LiuGong dealer can thoroughly inspect your machines and perform proper maintenance service to make sure every machine will run at top productivity with minimal downtime as well as ensuring the best fuel economy and lower operating costs.

TRAINING

LiuGong dealers provide training to help you efficiently operate your LiuGong equipment for top productivity, long machine life and low maintenance costs.



STANDARD EQUIPMENT

ENGINE SYSTEM

- Yanmar 4TNV94L-SLY 4-cylinder, water cooled, direct injection Stage Tier2 Diesel Engine
- Air filter with pre-cleaner

HYDRAULIC SYSTEM

- Dual direction auxiliary pipes
- Auto travel speed change
- Dual direction auxiliary pipes
- Swing boom

OPERATOR STATION

- TOPS cab
- Air conditioner, heater, defroster
- Suspension seat with height

- adjustable arm rests and retractable seat belt
- AM/FM Radio with MP3 audio jack
- 1 outside rearview mirror
- 1 cab rearview mirror
- Working Hour meter
- Voltmeter
- Windshield Wipers
- Cab and boom mounted working lights
- Fire Extinguisher
- Horn
- Storage box

UPPERSTRUCTURE

- One key for door locks, cap

- locks
- Fuel gauge
- Hydraulic oil level gauge

UNDERCARRIAGE

- 400 mm steel track-shoes
- 5 lower, 1 upper roller

FRONT ATTACHMENTS

- 3,000 mm boom and 1,600 mm arm
- 0.21 m³ (SAE, heaped) bucket
- Dozer blade

OPTIONAL EQUIPMENT

HYDRAULIC SYSTEM

- Hydraulic quick coupler
- Ripper Shank
- Mechanical quick coupler

OPERATOR STATION

- TOP Guard and FRONT Guard
- Cab grid guard

- Rotating beacon

UPPERSTRUCTURE

- Electrical fuel refilling pump

UNDERCARRIAGE

- 600 mm Steel tracks
- Rubber tracks

FRONT ATTACHMENTS

- 0.18, 0.24, 0.32 m³ (SAE, heaped) buckets
- Hydraulic jack hammer

SPECIFICATIONS

ENGINE	
Emission Regulation	Tier 3 / Stage IIIA
Model	Yanmar 4TNV94L-BVLY
Type	4-cylinder, 4-stroke, in line, water-cooled, diesel engine.
Gross Power	36.2 kW (48.5 hp) @ 2,100 rpm
Net Power	33.7 kW (45.2 hp) @ 2,100 rpm
Maximum Torque	210 N·m @ 1,100 rpm
Bore x Stroke	94 x 110 mm
Displacement	3.05 L

DRIVE AND BRAKES	
Driven by a one-piece two-gear piston hydraulic motor and reducer with small volume and strong traction; the motor and hydraulic pipelines are hidden in the track mechanism to prevent damage from rugged road surfaces; parking brake and shock-absorbing valve are installed inside the motor, ensuring stable travelling and parking as well as reliable braking.	
Max. Travel Speed	High: 3.9 km/h Low: 2.5 km/h
Gradeability	70 %
Drawbar Pull	50.7 kN

SWING SYSTEM	
The high- torque piston swing motor, with integral spring set, and automatic hydraulic release swing brake, is bolted directly to the swing reduction planetary swing gear box. The swing brake automatically resets for safer operation within five seconds of the swing function lever being brought to neutral. This insures safe travel and parking conditions.	
Swing Speed	9.2 rpm

HYDRAULIC SYSTEM	
Main Pump	Two variable displacement piston pumps
Main Pumps Total Flow	155 L/min
Relief Pressure, main	24.5 Mpa
Pilot Pump Flow	10.8 L/min

UNDERCARRIAGE	
Center Frame	X-Frame
Track Adjustment	Hydraulic
Number of Carrier Rollers	1 each side
Number of Track Rollers	5 each side
Number of Idler Rollers	1 each side
Number of Shoes	40 each side
Width of Track Shoes	400 mm

ELECTRIC SYSTEM	
System Voltage	12 V
Batteries	12 V

SERVICE CAPACITIES	
Fuel Tank	100 L
Engine Oil	9 L
Final Drive (each)	1.1 L
Cooling System	14 L
Hydraulic Reservoir	82 L
Hydraulic System Total	125 L

OPERATING WEIGHT (APPROXIMATION)	
The operating weight includes 3,000 mm boom, 1,600 mm arm, SAE heaped 0.21 m³ bucket, 400mm shoes, operator, lubricating oil, cooling liquid, full fuel tank, and standard configuration.	
Shoe Ground Pressure	33 kPa
Operating Weight	5,900 kg

906D SPECIFICATIONS >>>

DIMENSIONS



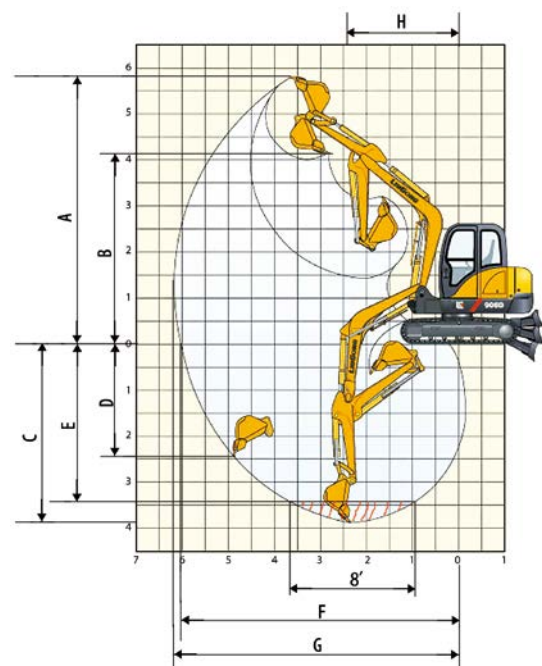
Unit: mm

Boom length	Boom length	3,000
Arm length	Arm length	1,600
A	Overall length	5,900
B	Overall height	2,630
C	Track gauge	1,500
D	Overall width	1,900
E	Overall length of crawler	2,540
F	Track Length on ground	1,990

G	Overall Width of Upper structure	1,820
H	Tail Swing Radius	1,650
H'	Rear-end Length	1,650
I	Counterweight Ground clearance	590
J	Overall Height of Cab	2,630
K	Min. Ground clearance	350
L	Track Shoe Width	400
M	Undercarriage Length with blade	3,450

Unit: mm

Boom length	Boom length	3,000
Arm length	Arm length	1,600
Bucket capacity	Bucket capacity	0.21 m³
A	Dig height	5,790
B	Dump height	4,135
C	Dig depth	3,875
D	Dig depth of vertical	2,940
E	Depth of 8' bottom	3,450
F	Reach at ground level	6,065
G	Max reach	6,205
H	Min swing radius	2,430
ISO	Bucket breakout force	41 kN
ISO	Arm breakout force	31 kN



Note:

- ※Indicates the load is limited by hydraulic capacity rather than tipping capacity.
- The above rated loads are in compliance with ISO 10567 hydraulic excavator lift capacity rating standard. They do not exceed 87% of hydraulic lifting capacity or 75% tipping load.
- Ratings at bucket lift hook.



Rating over-side



Rating over-front

Blade Position : Down

Bucket: SAE, 0.21 m³, Boom: 3,000 mm, Arm: 1,600 mm, Shoes: 400 mm

Lift Point Height									Max Reach			
		2 m		3 m		4 m		5 m		Front	Side	A (mm)
4 m	kg					※1,330	990			※1,260	890	4,270
3 m	kg					※1,410	960			1,250	680	4,880
2 m	kg	※4,370	2,810	※2,220	1,460	※1,670	910	※1,150	620	1,140	620	5,190
1 m	kg			※2,600	1,330	※1,610	860	※1,120	600	1,040	560	5,250
0	kg	※5,740	2,490	※2,530	1,270	※1,560	820	※1,100	580	1,100	570	5,090
-1 m	kg	※5,110	2,510	※2,510	1,260	※1,550	810			1,250	660	4,670
-2 m	kg			※2,480	1,280					1,710	880	3,890

Blade Position : Up

Bucket: SAE, 0.21 m³, Boom: 3,000 mm, Arm: 1,600 mm, Shoes: 400 mm

Lift Point Height									Max Reach			
		2 m		3 m		4 m		5 m		Front	Side	A (mm)
4 m	kg					1,330	※990			1,220	890	4,270
3 m	kg					1,310	960			950	680	4,880
2 m	kg	4,210	2,810	2,030	1,460	1,260	910	870	620	870	620	5,190
1 m	kg			1,890	1,330	1,200	860	840	600	790	560	5,250
0	kg	3,830	2,490	1,830	1,270	1,160	820	820	580	820	570	5,090
-1 m	kg	3,850	2,510	1,810	1,260	1,150	810			930	660	4,670
-2 m	kg			1,840	1,280					1,260	880	3,890