

STRONG PRESENCE, SUBLIME SUPPORT

LiuGong has established a solid infrastructure with over 12,000 employees worldwide, 320 dealers, 7 regional parts depots and 9 strategically placed global offices to support its dealer and serve customers properly result in less damage and machine downtime.



The LiuGong series of logos herein, including but not limited to word marks, device marks, letter of alphabet marks and combination marks, as the registered trademarks of Guangxi Liugong Group Co., Ltd. are used by Guangxi Liugong Machinery Co., Ltd. with legal permission, and shall not be used without permission. Specifications and designs are subject to change without notice. Machines shown may include optional equipment and may not include all standard equipment.

Always a LiuGong dealer near you.



Guangxi Liugong Machinery Co., Ltd.

No. 1 Liutai Road, Liuzhou, Guangxi 545007, PR China
T: +86 772 388 6124 E: overseas@liugong.com
www.liugong.com

Like and follow us:



Version 1.0

06/2015 Designed by LiuGong

Engine	Cummins B3.3
Gross Power	60 kW (80.5 hp)
Net Power	54 kW (72.4 hp)
Maximum Digging Depth	4,150 mm
Bucket Capacity	0.32 m ³
Operating Weight	7,800 kg

908D

EXCAVATOR

LIUGONG



TOUGH WORLD. TOUGH EQUIPMENT.



**BUILT TO
OUTLAST**



SUMMARIZED BENEFITS

BUILT FOR EFFICIENCY

Fuel Efficient Yanamar Engine
Advanced Hydraulic System

EASY TO MAINTAIN

Easy Engine Access
Convenient Maintenance Ports
Fault Diagnostic System

ALWAYS RELIABLE

Parts, Service, Attachments to Count on
Wider More Stable Axles
Proven Hydraulics

OPERATOR COMFORT AND SAFETY

Ergonomic Design
Minimal Kick Back
Excellent Visibility
Comfortable Low Noise Cabin

ALL-ROUND SERVICE SUPPORT

Exceptional Service Support
Parts Support
Maintenance Support
Machine Inspection
Training





**DELIVERING
ALL-ROUND
PERFORMANCE
WITH LOW
RUNNING COSTS**

TOUGH WORLD. TOUGH EQUIPMENT.>>>

BUILT FOR EFFICIENCY

EQUIPPED WITH A FUEL EFFICIENT WORLD- CLASS

Cummins B3.3 The 908D provides 60 kW (80.5 hp) @ 2,200 rpm while saving on fuel costs.

ADVANCED HYDRAULIC SYSTEM

Arm" in" regeneration circuitry system

When the arm is moved to a certain point the regeneration valve is activated, so that the return oil flow from the arm cylinder rod side can be reused on the arm. piston side, this allows a faster arm in movement.

This protects the arm cylinder piston from cavitation due to a lack of hydraulic oil when the arm is in Straight Travel Function

BOOM & ARM HOLDING SYSTEM

Prevents the boom and arm from falling when in a neutral position.

SMOOTH OPERATING TRAVEL PILOT VALVES

The travel pilot valves are equipped with hydraulic dampeners, this makes operation both more efficient and much smoother.





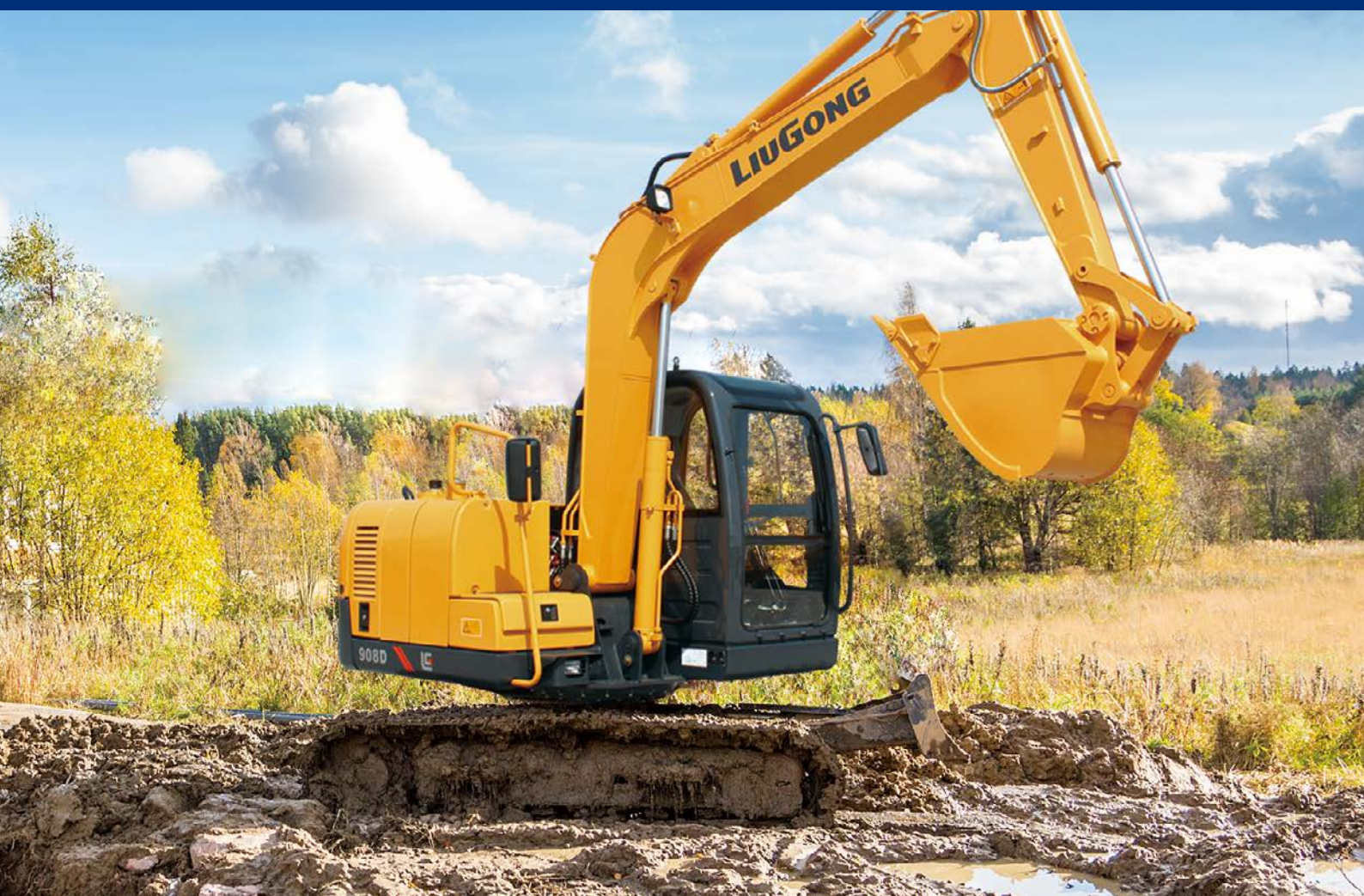
EASY TO MAINTAIN

EASY ENGINE ACCESS

The 908D is designed for convenient maintenance. The engine is conveniently accessible when the rear hood is lifted up it provides plenty of space for maintenance, which can be done from a standing level.

CONVENIENT MAINTENANCE PORTS

Maintenance ports and the hydraulic system on the 908D have been placed in convenient locations for quick inspection so you spend less time working on your machine, and have more time having your machine work for you.





**CONSTRUCTION
EQUIPMENT
AHEAD**



ALWAYS RELIABLE

WORLD CLASS COMPONENTS

The 908D uses major components and systems from advanced suppliers like Cummins, KYB, Nabtesco and advanced in-house technology from LiuGong.

PARTS, SERVICE AND ATTACHMENTS TO COUNT ON

Part of a reliable excavators is having parts, service and attachments so reliable you can count on them whenever, wherever. Genuine LiuGong parts are the perfect match to keep your investment working over the years and can be counted on when you need. Service is reliable and can be counted on to keep your excavators up and running. Attachments for the machine have been made in-house and are part of a complete LiuGong system.

STANDARD REINFORCED BUCKET

Reinforced idler linkage for the toughest jobs

Rock guard plates with vertical reinforcement strips protect the arm.

Reliable lower frame

WIDER MORE STABLE AXLES

The 908D has an improved center of gravity thanks to wider more stable axles, this makes operation easier, more reliable and safer.



COMFORT AND SAFETY

ERGONOMIC DESIGN

This is one of LiuGong's many ergonomically designed machines, placement of the buttons, levers, seat, and layout of the operator environment is designed to fit the body of the operator.

The pilot lock handle on the handrail box prevents unexpected movement since it locks the machine's ignition system.

Soft, flexible, pilot control operating handles are convenient and comfortable for long operating hours.

Large, swing design foot pedals are comfortable and allow the operator to keep their feet on the foot rest and still operate the machine.

Easy to clean, form-fitted, floor mat is more functional and durable.

High-back suspension seat is adjustable for all operator weights and heights.

High-powered air conditioner and efficient arrangement of air outlets combine for great operator comfort—even when the front window is open.

MINIMAL KICK BACK

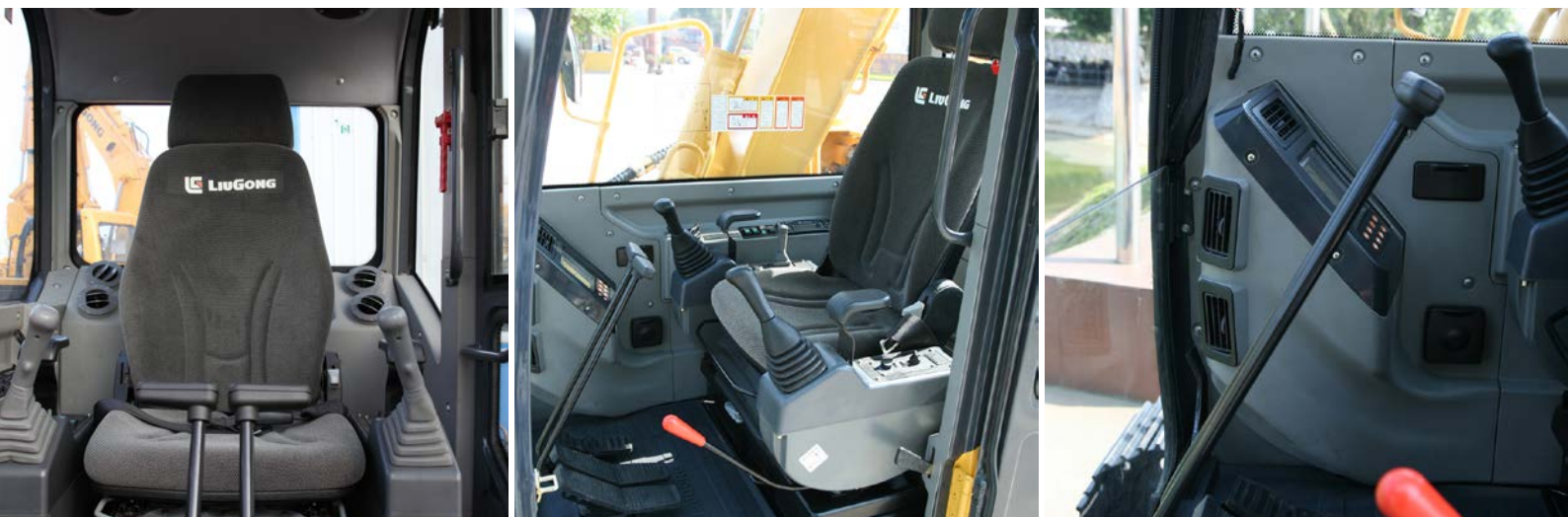
During operation and swinging the kick back is minimized not only to improve control and operator comfort but also to reduce damage to the machine.

COMFORTABLE, LOW NOISE CABIN

The spacious climate-controlled cab is built with advanced sound-reducing technology for both outside the cab and at the operator's ear.

EXCELLENT VISIBILITY

The enlarged cab allows the operator excellent 360-degree visibility including the working instruments, and the rear of the machine. This makes operation easier and much safer.





ALL- ROUND SERVICE SUPPORT

EXCEPTIONAL SERVICE SUPPORT

The LiuGong Product Support Team provides parts and service solutions for the owning and operating needs of our customers. Be assured that with every machine purchased a dedicated team of LiuGong specialists are ready to provide exceptional support. For all your machine support needs from warranty and service repairs, planned maintenance, training, and getting the right genuine LiuGong part, contact your local LiuGong dealer and experience our service support promise.

PARTS SUPPORT

Genuine LiuGong Parts are only available through the LiuGong Dealer Network. Keep your machines running at its highest levers by using only Genuine LiuGong Parts. LiuGong maintains an extensive inventory in its 11 Parts Distribution Centers around the world to bring the parts closer to the customer.

MAINTENANCE SUPPORT

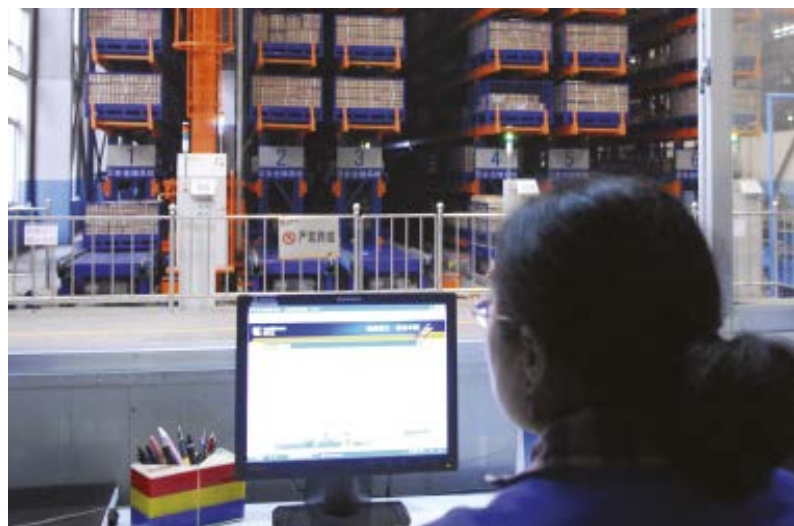
Your local LiuGong dealer will arrange a factory-trained service expert to perform all maintenance on your equipment to the precise specs and schedules required to keep your machine at top productivity.

MACHINE INSPECTION

Before every busy season, your LiuGong dealer can thoroughly inspect your machines and perform proper maintenance service to make sure every machine will run at top productivity with minimal downtime as well as ensuring the best fuel economy and lower operating costs.

TRAINING

LiuGong dealers provide training to help you efficiently operate your LiuGong equipment for top productivity, long machine life and low maintenance costs.



STANDARD EQUIPMENT

ENGINE SYSTEM

- Yanmar 4TNV94L-SLY 4-cylinder, water cooled, direct injection Stage Tier2 Diesel Engine
- Air filter with pre-cleaner

HYDRAULIC SYSTEM

- Dual direction auxiliary pipes
- Auto travel speed change
- Dual direction auxiliary pipes
- Swing boom

OPERATOR STATION

- TOPS cab
- Air conditioner, heater, defroster
- Suspension seat with height adjustable arm rests and retractable seat belt

- AM/FM Radio with MP3 audio jack
- 1 outside rearview mirror
- 1 cab rearview mirror
- Working Hour meter
- Voltmeter
- Windshield Wipers
- Cab and boom mounted working lights
- Fire Extinguisher
- Horn
- Storage box

UPPERSTRUCTURE

- One key for door locks, cap locks
- Fuel gauge
- Hydraulic oil level gauge

UNDERCARRIAGE

- 400 mm double grouser rubber track-shoes
- 5 lower, 1 upper roller
- 1 track frame under-guards (each-side)

FRONT ATTACHMENTS

- 3,710 mm boom and 1,650 mm arm
- 0.32 m³ (SAE, heaped) bucket

OPTIONAL EQUIPMENT

- 0.28 m³ reinforced bucket
- 0.14 m³ narrow bucket
- 0.18 m³ narrow bucket
- 0.36 m³ large bucket
- Arm: 2,100 mm
- 600 mm wide tracks
- Steel track with rubber pad
- 450 mm Rubber track

- OPG (operation protection guard Structure)
- 2 outside rearview mirrors
- Heavy lift and power boost
- Boom/arm holding valves
- Control pattern change valve
- Travel alarm
- In cab rearview mirror

- Rotating beacon
- Refuel pump
- Hammer piping
- 2 way aux. piping
- Hydraulic jackhammer
- Hydraulic quick coupler
- Ripper shank

SPECIFICATIONS

ENGINE	
Emission Regulation	Tier 2 / Stage II
Model	Cummins B3.3
Type	4-cylinder, water cooled, direct injection
Gross Power	60 kW (80.5 hp) @ 2,200 rpm
Net Power	54 kW (72.4 hp) @ 2,200 rpm
Maximum Torque	292 N·m @ 1,600 rpm
Bore x Stroke	95 x 115 mm
Displacement	3.3 L

DRIVE AND BRAKES	
Driven by a one-piece two-gear piston hydraulic motor and reducer with small volume and strong traction; the motor and hydraulic pipelines are hidden in the track mechanism to prevent damage from rugged road surfaces; parking brake and shock-absorbing valve are installed inside the motor, ensuring stable travelling and parking as well as reliable braking.	
Max. Travel Speed	High: 4.2 km/h Low: 3.0 km/h
Gradeability	70 %
Drawbar Pull	56 kN

SWING SYSTEM	
The high- torque piston swing motor, with integral spring set, and automatic hydraulic release swing brake, is bolted directly to the swing reduction planetary swing gear box. The swing brake automatically resets for safer operation within five seconds of the swing function lever being brought to neutral. This insures safe travel and parking conditions.	
Swing Speed	12.5 rpm

HYDRAULIC SYSTEM	
Main Pump	Two variable displacement piston pumps
Main Pumps Total Flow	158 L/min
Relief Pressure, main	27.5 Mpa
Pilot Pump Flow	20.7 L/min

UNDERCARRIAGE	
Center Frame	X-Frame
Track Adjustment	Hydraulic
Number of Carrier Rollers	1 each side
Number of Track Rollers	6 each side
Number of Idler Rollers	1 each side
Number of Shoes	39 each side
Width of Track Shoes	450 mm

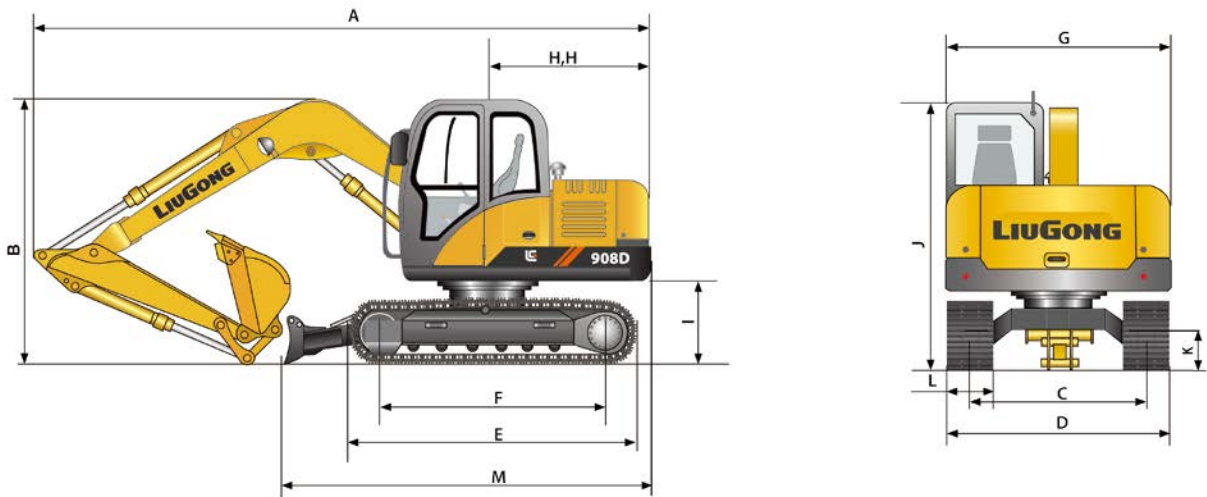
ELECTRIC SYSTEM	
System Voltage	12 V
Batteries	12 V

SERVICE CAPACITIES	
Fuel Tank	170 L
Engine Oil	7 L
Final Drive (each)	1.3 L
Cooling System	15 L
Hydraulic Reservoir	60 L
Hydraulic System Total	110 L

OPERATING WEIGHT (APPROXIMATION)	
The operating weight includes 3,710 mm boom, 1,650 mm arm, SAE heaped 0.32 m³ bucket, 450 mm shoes, operator, lubricating oil, cooling liquid, full fuel tank, and standard configuration.	
Shoe Ground Pressure	35.5 kPa
Operating Weight	7,800 kg

908D SPECIFICATIONS >>>

DIMENSIONS



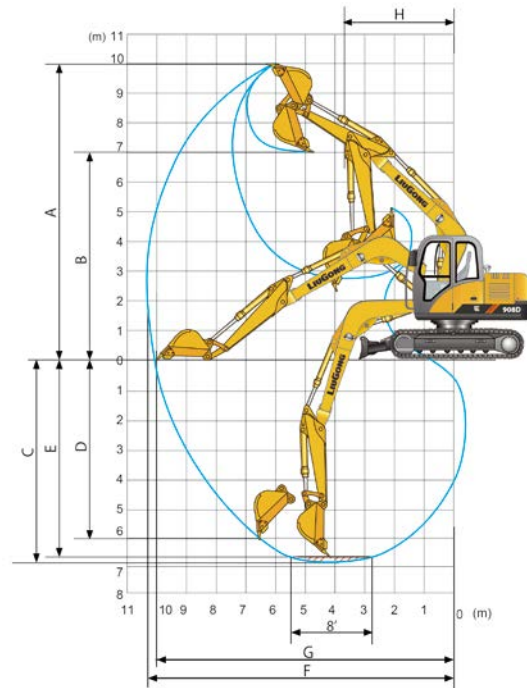
Unit: mm

Boom length	Boom length	3,710
Arm length	Arm length	1,650 2,100
A	Overall length	6,130 6,130
B	Overall height of boom	2,600 2,795
C	Track gauge	1,750
D	Overall width	2,200
E	Overall length of crawler	2,845
F	Track Length on ground	2,230

G	Overall Width of Upper structure	2,255
H	Tail Swing Radius	1,785
H'	Rear-end Length	1,785
I	Counterweight Ground clearance	780
J	Overall Height of Cab	2,600
K	Min. Ground clearance	380
L	Track Shoe Width	450
M	Undercarriage Length with blade	3,730

Unit: mm

Boom length	Boom length	3,710
Arm length	Arm length	1,650 2,100
Bucket capacity	Bucket capacity	0.32 m³ 0.32 m³
A	Dig height	7,150 7,645
B	Dump height	5,080 5,560
C	Dig depth	4,150 4,610
D	Dig depth of vertical	3,230 4,050
E	Depth of 8 bottom	3,785 4,350
F	Max reach	6,375 6,850
G	Reach at ground level	6,225 6,720
H	Min swing radius	1,815 1,805
ISO	Bucket breakout force	61 kN
	Arm breakout force	40.1 kN 37 kN



Note:

- ※Indicates the load is limited by hydraulic capacity rather than tipping capacity.
- The above rated loads are in compliance with ISO 10567 hydraulic excavator lift capacity rating standard. They do not exceed 87% of hydraulic lifting capacity or 75% tipping load.
- Ratings at bucket lift hook.



Rating over-side



Rating over-front

Blade Position : Down

Bucket: SAE 0.32 m ³ , Boom: 3,710 mm, Arm: 1,650 mm, Shoes: 450 mm											
Lift Point Height									Max Reach		
	2 m	3 m	4 m	5 m	6 m	7 m	8 m	9 m	Front	Side	A (mm)
5 m kg		※1,740	※1,740						※1,660	1,580	3,730
4 m Kg		※1,880	※1,880	※1,810	1,680				※1,760	1,560	4,510
3 m kg	※2,610	※2,610	※2,350	※2,350	※1,990	1,620			※1,780	1,230	4,970
2 m kg			※3,000	2,400	※2,280	1,540	※1,940	1,080	※1,980	1,030	5,200
1 m kg			※3,540	2,260	※2,550	1,470	※2,060	1,040	※2,010	1,010	5,230
0 kg	※4,230	3,660	※3,740	2,180	※2,700	1,420	※2,100	1,020	※2,050	1,000	5,060
-1 m kg	※4,200	3,610	※3,620	2,160	※2,650	1,400			※2,150	820	4,670
-2 m kg	※4,150	3,550	※3,190	2,180					※2,220	610	3,990

Blade Position : Up

Bucket: SAE 0.32 m ³ , Boom: 3,710 mm, Arm: 1,650 mm, Shoes: 450 mm											
Lift Point Height									Max Reach		
	2 m	3 m	4 m	5 m	6 m	7 m	8 m	9 m	Front	Side	A (mm)
5 m kg		※1,740	※1,740						※1,660	1,580	3,730
4 m Kg		※1,880	※1,880	※1,810	1,680				※1,720	1,560	4,510
3 m kg	※2,610	※2,610	※2,350	※2,350	※1,990	1,620			※1,610	1,230	4,970
2 m kg			3,000	2,400	2,130	1,540	1,490	1,080	1,130	1,030	5,200
1 m kg			3,250	2,260	2,050	1,470	1,450	1,040	1,150	1,010	5,230
0 kg	※4,230	3,660	3,170	2,180	2,000	1,420	1,420	1,020	1,290	1,000	5,060
-1 m kg	※4,180	3,600	3,140	2,160	1,980	1,400			1,310	820	4,670
-2 m kg	※4,020	3,480	3,170	2,180					1,330	610	3,990