

| | |
|-------------------------|----------------------------|
| Engine | WeiChai Deutz WP6G125E22 |
| Gross Power | 92 kW (125 hp) @ 2,200 rpm |
| Net Power | 82 kW (111 hp) @ 2,200 rpm |
| Operating Weight | 10,300 kg |
| Standard Bucket Size | 1.7 m ³ |
| Standard Breakout Force | 100 kN |
| Standard Dump Clearance | 2,910 mm |

836 WHEEL LOADER



TOUGH WORLD. TOUGH EQUIPMENT.

836 SPECIFICATIONS >>>

ENGINE

| | |
|---------------------|----------------------------|
| Emission Regulation | Tier 2 / Stage II |
| Make | Weichai Deutz |
| Model | WP6G125E22 |
| Gross Power | 92 kW (125 hp) @ 2,200 rpm |
| Net Power | 82 kW (111 hp) @ 2,200 rpm |
| Peak Torque | 500 N · m |
| Displacement | 6.75 L |
| Number of Cylinders | 6 |
| Aspiration | Turbocharged |

TRANSMISSION

| | |
|---------------------------|-----------------------------|
| Transmission Type | Planetary type, power shift |
| Torque Converter | Double stage, four elements |
| Maximum Travel Speed, fwd | 35 km/h |
| Maximum Travel Speed, rev | 14.5 km/h |
| Number of Speeds, fwd | 2 |
| Number of Speeds, rev | 1 |

AXLES

| | |
|-------------------------|--------------|
| Differential Front Type | Conventional |
| Differential Rear Type | Conventional |
| Axle Oscillation | ±11° |

STEERING

| | |
|--------------------------|-------------|
| Steering Configuration | Articulated |
| Steering Relief Pressure | 14.8 Mpa |

BRAKES

| | |
|-------------------------|------------------------|
| Service Brake Type | Caliper disc brake |
| Service Brake Actuation | Air over hydraulic |
| Parking Brake Type | Flexible shaft control |
| Parking Brake Actuation | Mechanical |

HYDRAULIC SYSTEM

| | |
|--------------------------|--------|
| Main Pump Type | Gear |
| Main Relief Pressure | 17 MPa |
| Raise | 4.6 s |
| Dump Time | 1.2 s |
| Float Down Time | 2.6 s |
| Fastest Total Cycle Time | 8.4 s |

LOADER ARM PERFORMANCE

| | |
|-----------------------------------------|----------|
| Tipping Load - Straight | 7,342 kg |
| Tipping Load - Full Turn | 6,628 kg |
| Bucket Breakout Force | 100 kN |
| Maximum Dump Angle at Full Height | 45° |
| Dump Clearance at Full Height Discharge | 2,910 mm |
| Dump Reach at Full Height Discharge | 1,072 mm |
| Maximum Hinge Pin Height | 3,740 mm |
| Maximum Digging Depth, Bucket Level | 43 mm |
| Bucket Rollback at Ground Level | 43° |
| Bucket Rollback at Carry | 50.5° |
| Bucket Rollback at Maximum Height | 63.5° |

BUCKET PERFORMANCE

| | |
|------------------|--------------------|
| Reference Bucket | 1.7 m ³ |
|------------------|--------------------|

DIMENSIONS

| | |
|---------------------------------|----------|
| Length with Bucket Down | 6,880 mm |
| Width Over Tires | 2,295 mm |
| Wheelbase | 2,870 mm |
| Wheel Tread | 1,850 mm |
| Ground Clearance | 322 mm |
| Turn Angle, Either Side | 40° |
| Rear Angle of Departure | 30° |
| Turning Radius, Outside of Tire | 5,173 mm |
| Turning Radius, Center of Tire | 4,951 mm |
| Turning Radius, Bucket Carry | 5,674 mm |

TIRES

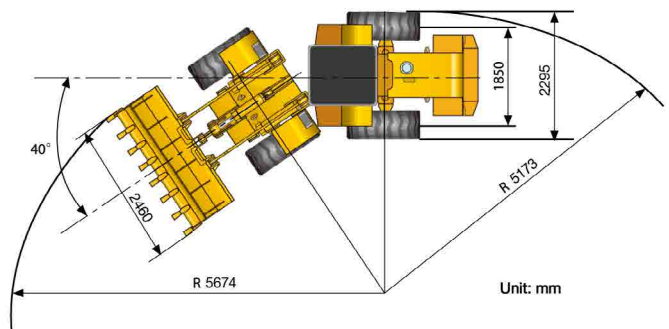
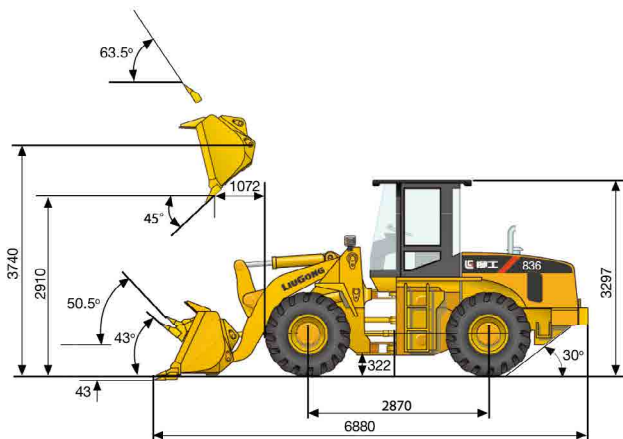
| | |
|-----------|-----------|
| Tire Size | 17.5 - 25 |
|-----------|-----------|

OPERATING WEIGHTS

| | |
|------------------|-----------|
| Operating Weight | 10,300 kg |
|------------------|-----------|

SERVICE CAPACITY

| | |
|-----------------------------------|-------|
| Fuel Tank | 150 L |
| Engine Oil | 13 L |
| Cooling System | 34 L |
| Hydraulic Reservoir | 120 L |
| Transmission and Torque Converter | 45 L |
| Axles, each | 22 L |



Guangxi Liugong Machinery Co., Ltd.

No. 1 Liutai Road, Liuzhou, Guangxi 545007, PR China
T: +86 772 3886124 E: overseas@liugong.com
www.liugong.com

Specifications and designs are subject to change without notice. Machines shown may include optional equipment.

05/2014 Designed by LiuGong